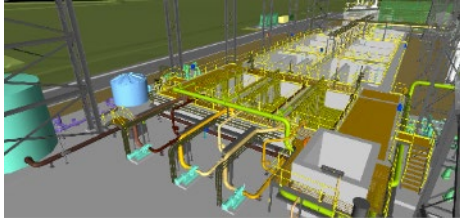


REEVES ENVICO PROJECT LIST

Wastewater Treatment Plants (WWTP)

Drouin WWTP | Gippsland Water | 2020



In Partnership with Icon – CCB Envico have been appointed to construct a new MBR wastewater treatment plant to cater for future growth in the Drouin region. The plant includes new inlet works, MBR bioreactor, chemical dosing systems, sludge dewatering, odour control, administration building, blower building, two switch room and associated hydraulic, electrical and civil infrastructure.

Langi Kal Kal WWTP | Victoria State Government Dept. of Justice and Regulation | 2018-2019



CCB Envico were appointed by the Department of Justice to do a detailed Design and Construction of a new WWTP at Langi Kal Kal Prison. Works included a new wastewater transfer pump station, inlet works, Class B and C reuse system, and multiple large lagoons: 2 x facultative lagoon, 2 x maturation lagoon and winter storage lagoon.

Hay WWTP | NSW Public Works | 2018-2019



CCB Envico were appointed to replace the current Hay WWTP with a 3,500 Equivalent person intermittently decanting aeration (IDEA) plant. The IDEA reactor will incorporate a siphon decanting system, surface aeration system, dry well type submersible waste activated sludge (WAS) pump and WAS rising main to transfer waste activated sludge to the sludge lagoons.

Dubbo STP Major Upgrade | Dubbo City Council | 2014-2016



CCB Envico in Partnership with Cockram were appointed to carry out the augmentation and expansion of an existing WWTP to upgrade to a 53,000 EP plant. The plant includes inlet works, chemical dosing, IDEA tanks, disinfection system and enlarging the existing sludge lagoons.

Wallan STP Upgrade | Yarra Valley Water | 2015-2016



Augmentation and expansion of an existing WWTP which includes inlet works, chemical dosing, IDEA tanks, disinfection system and enlarging the existing sludge lagoons.

Shoalhaven Heads WWTP | Shoalhaven Water | 2012



Augmentation and expansion of an existing WWTP which includes inlet works, chemical dosing, IDEA tanks, disinfection system and enlarging the existing sludge lagoons.

Mulwala WWTP | Department of Commerce – Wastewater Services | 2007-2008



A complete replacement of the wastewater treatment plant including IDEA tank, inlet structure, sludge lagoons and chemical dosing etc.

REEVES ENVICO PROJECT LIST

International Projects - Water and Wastewater

Auki Water Supply Project Malaita Province | Solomon Islands Water Authority | 2019-2020



Reeves Envico Joint Venture to supply and construct a 1Ml water tank, Interconnecting transfer lines and pump station on Auki in the Malaita Province of the Solomon Islands.

Ebeye Water & Sanitation Project | Asian Development Bank (ADB) | 2017-2020



Upgrade and expand the island's water supply and wastewater infrastructure including a lagoon outfall, reticulated sewerage system, rising mains, pump stations, screening facilities, rehabilitation of existing manholes, an elevated reservoir and pump station building, saltwater reticulation for toilet flushing and for fire hydrants and the installation of new pre-paid water meters throughout the island.

Bulk Water Transmission Pipeline, East Kola to Tasahe | Solomon Islands Water Authority | 2017



Contractor in joint venture with CCB Envico for construction of the Titinge to East Kola Bulk Water Transmission Pipeline.

Kiribati Sanitation Improvement Program | Kiribati Ministry of Public Works | 2016



A complete refurbishment of 21 sewer pump stations and a significant refurbishment of the wastewater collection system across Tarawa Kiribati. The project included renovation of saltwater collection galleries and storages and some network improvements.

Rehabilitation of the Colombo WWTP Stations | National Water Supply & Drainage Board | 2014-2017



Rehabilitation of 6 pump stations including the design, construction and commissioning and handover of a new preliminary treatment area and introduction of new pumps to pump sewage cater for the retention of grit and screenings

Pohnpei | Pohnpei Utilities Corporation | 2015



D&C upgrade and expansion of 5.1 ML/D STP in the Federated States of Micronesia including two aeration tanks each with a central clarifier and outfall hypochlorite dosing plus separate sludge digester. The project also incorporated works to the ocean and refurbishment of 8 pump stations with new submersible pumps and power configurations.

Weno WWTP Rehabilitation | Chuuk Public Utilities Corporation | 2005



Design and construct WWTP including refurbishment and augmentation of pumping and aeration capacity at the WWTP, refurbishment of the existing aeration/digester tank; construction of drying beds and installation of facilities for the disinfection of the effluent

REEVES ENVICO PROJECT LIST

Water Recycling Projects

Surbiton Park RWP Biosolids Facility Upgrade | MWH Australia | 2016-2018



Surbiton Park RWP activated sludge plant comprises primary and secondary treatment servicing a population of 63,700 with an (ADWF) of 12.05 ML/day. Treated effluent is primarily used for the irrigation of surrounding agricultural land. Growth estimates necessitate a \$8m D&C Biosolids upgrade by CCB Envico including a new insitu concrete 5kpa mesophilic anaerobic digester (liquid working volume of 3,200 m³) and attendant processes

Merrifield Recycled Water Project | Yarra Valley Water | 2013



The Merrifield Stormwater Treatment Plant is a 1 ML/day plant which produces Class A water from stormwater run-off obtained from MAB's greenfield Merrifield development. The plant uses DAFF filtration, UF treatment and chemical dosing. This is an innovative project deployed as part of Yarra Valley Water's strategy to decentralise their water supply.

Black Rock STP - Building and Civil works | John Holland / Barwon Water | 2013



Construction of all Civil and Building Works to the 9ML Reclaimed Water Facility including the construction of Chlorine Contact tanks, Neutralisation tanks, road works, feed and process pipework, pipework ducts, electrical in ground infrastructure and the construction of a 70m x 14m Process building to house the Recycled water Factory at the Black Rock Wastewater Plant. Works also include the fit out, roofing and conversion of an IDEA tank to a raw water storage

Mount Martha Treatment Plant Mechanical | Transfield South East Water Alliance | 2013



Instalment of 5 Pall ultra-filtration skids to the Mt Martha Tertiary Treatment Plant, with associated UV system and chemical dosing.

Cowes Class A Recycled Water Treatment Plant | Westernport Water | 2012



Design and construction of a recycled water treatment plant to convert Class B recycled water to Class A recycled water.

Bendigo Recycle Water Pumping & Treatment Facility | Coliban Water | 2008



A Class A water treatment plant was completed at the end of 2007 however we have undertaken a continuous flow of additional work at the Epson Wastewater Treatment Plant.

REEVES ENVICO PROJECT LIST

Water Treatment Plants

Woodglen Water Treatment Plant | East Gippsland Water | 2010



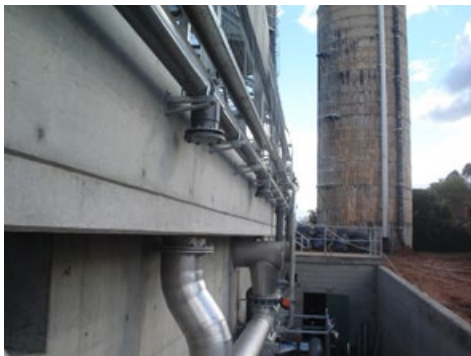
Design and construct of a 20 ML/day DAFF fresh water treatment plant on a greenfield site.

Warrnambool Water Treatment Plant | 2006



Design & Construct contract of a 19 ML/D DAF cell involving the addition of a second train to the existing Warrnambool Water Treatment Plant.

Cobram Water Treatment Plant | Goulburn Valley Water | 2005



Construct contract to cover the civil works of the Cobram DAFF Water Treatment Plant. Upgrade included large in ground of large in ground tanks and associated filter cells, pipework, road works and structural steel. CCB took over the construction of a 7m deep in ground tank once WorkCover stopped the previous contractor. CCB overlaid a proper OH&S regime and completed approximately \$700,000 of work on the tank.